

Historical Glass Museum

February 2019 Supplement



Museum Location:

1157 N. Orange Street
Redlands, California
909-798-0868

Mailing Address:

P. O. Box 9195
Redlands, CA 92375-2395

MAKE IT A DAY TRIP

The Museum is open most weekends, with the exception of major holidays (Christmas, Easter, 4th of July, etc.). Hours are 12 noon to about 4:00 (we'll stay a little later if you're not finished.). Our volunteer docents will be there to answer any questions you may have about the glass, the historical building or the Museum itself. You are free to browse all of the exhibits on your own, or we would be happy to show you around.

We offer group tours when they are scheduled in advance (to give us time to prepare and make sure that there are sufficient docents to handle a large group at once). A group consists of 8 or more people. To arrange for a group visit, please call our vice president, Bill Summers, at: **951-850-0915**

There are many nice restaurants in the area, so come for an early lunch and then spend the afternoon surrounded by beautiful glass.

A Look Inside ...

In this supplement to our newsletter, we'll show you some of the showcases of glass that are currently on view at the Museum. These photos really don't do justice to the glass! Come and visit us to see it all in person, and spend some time enjoying particular items that catch your attention.

Meanwhile, enjoy these photos.



PICTURED AT LEFT

This is only part of a donation of distinctive "apple green" Early American Pattern Glass (EAPG) made by various companies. The collection was donated by Gretchen Urban. In person, this display gives you a great appreciation of both the unique green color and the quality of this glass, which is more than a century old!

AN AMERICAN EXPERIENCE ...

This cabinet contains many examples of Fostoria's *American* pattern, which was introduced in 1915 and produced until the factory closed in 1986. The colored pieces are particularly prized, as colored *American* is scarce. Following the sale of Fostoria to Lancaster Colony, the *American* pattern was made by Dalzell Viking until the mid-1990s. Most pieces on display were a gift from the estate of member Julie Binkley.



MORE FOSTORIA ...

This large cabinet contains examples of many of Fostoria's popular patterns from the early days (1887) through the time of closing (mid-1990s). Virtually every color that the company made is on display here.



HEISEY ON DISPLAY ...

At left is a beautiful "Flamingo" pink punch bowl on matching stand with cups, made by the A. H. Heisey Company of Newark, Ohio. Heisey's original name for this pattern was *Grecian Border*, but collectors commonly call it *Greek Key*. This punch set is prized by collectors of Heisey glass, both for its substantial size and for the "flamingo" color. The punch bowl set was the only *Greek Key* item made in colored glass. We filled the punch bowl with potpourri for our holiday display!

LOTS OF FENTON GLASS

Four cases line one wall in the Museum, containing almost exclusively Fenton glass. Fenton was in business for 100 years, producing glass in a wide array of colors and treatment including "Carnival," "Stretch," "Hobnail" and many different versions of "Crest."

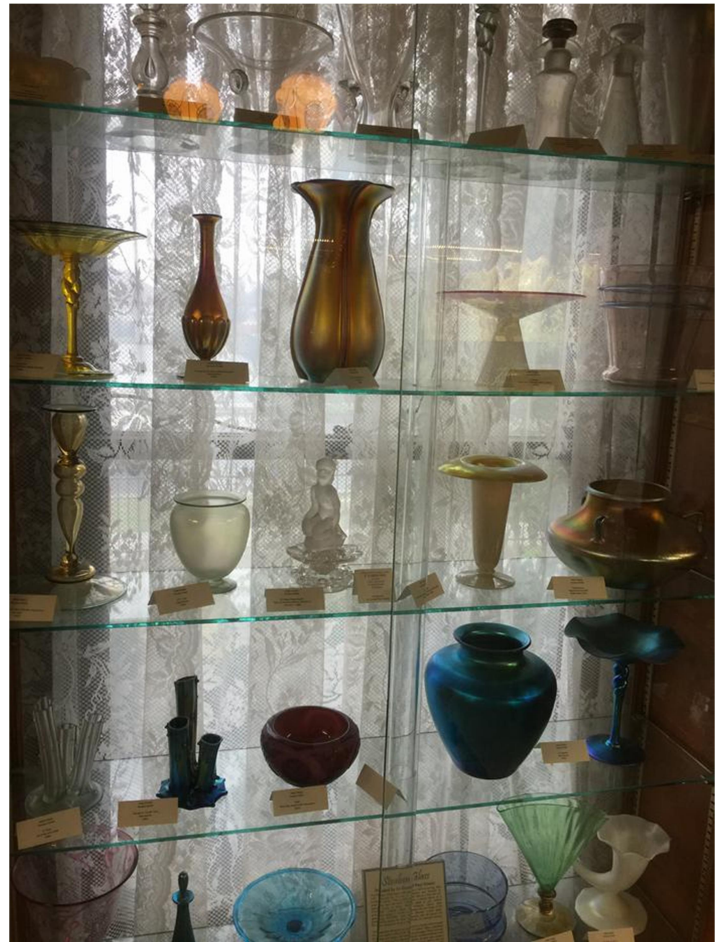


The showcase below contains opaque, cranberry and opalescent glass from the Victorian era, as well as additional colored Steuben glass.



WE HAVE ART GLASS, TOO

Pictured is a case containing Steuben glass, mostly from the era of Frederick Carder, when Steuben made a panoply of colored glass and innovative treatments. We are honored to have an example of Carder's rare *Cire Perdue* glass, made using the "lost wax" process.



OF SPECIAL INTEREST

Below is a set of demonstration pieces showing the thirteen steps needed to blow and then etch the Rose Point pattern onto a blank goblet.



THOROUGHLY MODERN, MILLIE

Although most of the Museum's displays consist of glass made prior to the 1950's, we would be remiss if we neglected to show examples of "Mid-Century Modern" glass. We have a colorful assortment of glassware from the 50's and 60s, made by Blenko, Rainbow, Pilgrim, Tiffin, Bischoff and other companies.



NOW A WORD FROM OUR SPONSOR

On Presidents Day, a group of volunteers spent the day at the Museum, processing donations and restocking the Gift Shop. During this time, we took the photographs of some of the display cases in the Museum. We wanted to share them with you, our members, in case you haven't visited lately, or if you live too far away to be able to see them in person.

While we were there, we were reminded of the condition of our 100-year-old building. It desperately needs exterior painting and even some repairs to the wood siding in some places.

It's not going to fall down, but it sure needs some tender loving care to preserve it. So, we will end this supplement with a word from our sponsor – the Restoration Fund.

RESTORATION FUND

The Board of Directors established a Restoration Fund designated to set aside funds for restoration and maintenance of our century-old building. Several expensive maintenance projects must be attended to, including external painting and concrete repairs. While the Museum is beautiful, the years have taken their toll on this historic home.

The Board welcomes cash donations designated for the Restoration Fund. We will report on progress in future newsletters.

Checks should be made out to the Museum, with a note designating the Restoration Fund. Send to:

Historical Glass Museum
P. O. Box 9195
Redlands, CA 92375-2395

SBVC Presents: Historical Glass Museum of Redlands
"Just Glass" - From Historic to Contemporary



Gresham Art Gallery
San Bernardino Valley College
March 18th - April 4th, 2019
Reception: Tuesday, March 26th, 2019 5-7pm

SPECIAL EXHIBIT FEATURING THE MUSEUM

Our Museum will be featured in a special exhibit at the San Bernardino Community College Art Gallery for three weeks, beginning in March. Details below:

San Bernardino Community College District
Gresham Art Gallery
701 So. Mt. Vernon Avenue
San Bernardino CA, 92410

Gallery Hours:
Mon-Thur 10am-12pm & 1pm-3pm
(909) 384-4432

SBVC Presents: Historical Glass Museum of Redlands
"Just Glass" From Vintage to Contemporary

Featuring:
Cambridge Glass Company
Heisey, A.H. Glass Company
Fostoria Glass Company
Fenton Art Glass Company
Steuben Glass-Frederic Carder

SBVC Gresham Art Gallery

March 18th - April 4th, 2019

Reception: Tuesday March 26th, 5-7pm
Talk in Room ART 144, Tuesday, March 26th, 5-5:30

Park in lots 3, 4 and 5
Find us on FACEBOOK:
SBVC Art Department