

Historical Glass Museum



November 2023 Volume 7 Issue 5

Museum Location:

1157 N. Orange Street
Redlands, California
909-798-0868

Mailing Address:

P. O. Box 9195
Redlands, CA 92375-2395



The Museum has a page on Facebook, for those who like to indulge in social media. Search for REDLANDS HISTORICAL GLASS MUSEUM. (There is an older page without the word Redlands, but we currently are not able to update it.)

We encourage you to "FOLLOW" our page, as that will alert you to any new posts that are made to the page. *If you would like to share photos of your collection, others will surely enjoy looking at them.* Just reply to any post.

Keeping in Touch

Things have been moving right along at the Museum for the past couple of months. We had 52 visitors in September and 109 in October. We had a September bus tour of 13 visitors and another in October with 30 visitors. That keeps our volunteer docents quite busy. If you would like to volunteer as a docent, even one day a month, we would love to have you.

GIFT SHOP NEWS

Sales have been good in the Gift Shop, with over \$900 in sales in September, and more than \$1200 in October. This is a major source of support for the Museum.

PARKING LOT SALE

On Saturday, November 11, the Museum will be holding a parking lot sale. We will be having a clearance of excess glass that was donated to our Gift Shop. Cash is preferred. Open 9am – 4pm. More info on page 4.

FENTON WORKSHOP

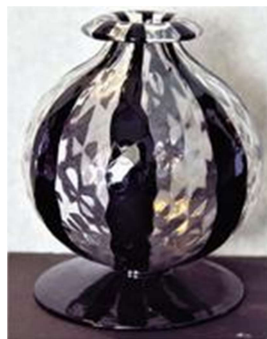
The Fenton Workshop we had planned for November has been postponed until sometime early next year. Stay tuned for a new date. Meanwhile, if **you** would like to present a workshop on a glass topic, contact us. We would love to have more workshops, on a variety of topics.

FROM THE COLLECTION



Historical Glass Museum

Steuben # 3114 Aurene Covered Vase or Urn. This piece was made around 1920. It stands 13 inches tall with the lid and is nearly 5 inches in diameter.



H.C. Fry Glass
From the 1920s

MEMBERSHIP CORNER

NEW MEMBERS SINCE LAST NEWSLETTER:

Laura Miller
Joel Compton

HOW CAN YOU HELP THE HISTORICAL GLASS MUSEUM?

There are many ways to support the Museum. We are a 501(c)(3) tax exempt organization, and donations are deductible on your income tax returns, to the fullest extent of current tax laws. Please speak to your accountant or tax professional for details about your particular situation.

BURMESE GLASS

By Wendy Steelhammer

Burmese is an opaque colored art glass that shades from yellow to pink and is found in two finishes – glossy (shiny) or satin (matte). Frederick Shirley of the Mount Washington Glass Company in New Bedford, Massachusetts developed the original formula and obtained the patent for Burmese glass in 1885. Using their own opal glass mixture, uranium oxide and reduced gold were added, resulting in a soft yellow opaque glass (from the uranium) that turned pink after heating (from the gold). As with all heat sensitive glass formulas (amberina, peach blow, Burmese etc.) the appearance of the glass can be changed by controlling, changing or selectively applying heat. The length of time in the furnace will determine the intensity of the color. The glass glows yellow green under long range black light due to the uranium. Most Burmese glass has a matt, satin finish, created using acid, but some were not treated in this way and retain their original, glossy finish.



Mt. Washington Burmese cream and sugar, crimped top edge



Mt. Washington Burmese decorated toothpick holders



Mt. Washington Burmese Jack-in-the-pulpit vase, 13 1/2"

The Historical Glass Museum in Redlands, CA houses only American made glass.

Burmese glass had its start in the United States and this article attempts to show its history spreading to other glass houses worldwide and back again to the United States.

In 1886, Mount Washington gave permission for Thomas Webb & Sons to create Burmese glass in England. Webb's Burmese glass found favor with Queen Victoria and was marketed as "Queen's Burmese Ware"

Burmese glass proved to be very popular and sold well during Victorian times. It was used to make a wide variety of dressing table items, tableware and vases, many of which were enhanced with painted decorations.

Burmese glass by Mount Washington was not marked or signed, but instead had paper labels, which are understandably often missing today. When Webb Burmese was first produced, the coloration matched that of Mount Washington Burmese because the same formula was used. At some point, Webb changed the formula that resulted in a deeper rose or salmon coloration on reheating. Some Czech/Bohemian factories such as Franz Welz and possibly others are now known to have produced Burmese glass for British and American markets.



Webb Burmese decorated fan vase



Webb Burmese glossy epergne-like vase in silver plated holder

Later incarnations of the Mount Washington factory also made their own versions of Burmese glass: "Gundersen Burmese" by the Gundersen Glass Works in 1956 and "Bryden Pairpoint Burmese" by Pairpoint Glass in 1970. Both of these later styles of Burmese were finished with ground pontil marks like earlier pieces, had a much more abrupt change in color from pink to yellow and were mostly glossy rather than satin finish.



Webb Burmese decorated vases (center one is glossy finish)

(Continued on next page)

THANKS TO OUR DONORS ...

We would like to acknowledge the donations of glass or other items, to be used either for display at the Museum or to be sold in the Gift Shop to support the Museum's operations. The following people donated glass and/or other items since the last newsletter. Thanks to all for your support of the Museum.

CASH DONATIONS:

September

\$100.00 Karen Fleisher in memory of William Kleese
\$20.00 Greg Sloan
\$29.90 David Adams (domain renewal)

October

\$160.00 Network for Good
(Kathi Jablonsky birthday fundraiser)
\$300.00 Lucretia Irving
\$20.00 Connie Walker
\$300 Steve & Shirley Barnett
(supplies for parking lot sale)

NON-MONETARY DONATIONS

September

Connie Wheeler
RJ Stowe
Jennifer Cline DiBenedetto

October

Kathy Barton
Janet Dyste
Lynne Nobles

The Board of Directors would like to thank each of these donors for their generosity.

Burmese - continued

A more recent version was also made after 1970 by the Fenton Art Glass Co. of West Virginia. The Fenton pieces were often marked or signed and may be found with their original labels still intact. Below are two examples of Fenton's Burmese decorated glass.



Finally, a considerable amount of Burmese glass was made in Murano, Italy from about 1970 through the early 1980s for export. It was brought to the American market by reproduction wholesalers like AA Importing or gift importers like Koscherak Bros. These pieces were more crudely made, with rough, snapped off pontil marks, or roughly ground pontils, without the smooth, concave polished finish. The satin effect was achieved with sand-blasting instead of acid, which resulted in a rougher feel to the glass.

As with all glass collecting, knowing your shapes, colors and the feel of the glass can assist with properly identifying its origin.



Crater Lake



Historical Glass Museum
Ahwanee Hotel (Yosemite Park)



Historical Glass Museum
Yellowstone Park

Above are three advertising paperweights from the Museum collection, in this case from some of our National Parks. All three date from sometime in the mid-twentieth century. The whole collection is quite fascinating, so be sure to check it out when you visit the Museum.

INTRODUCING OUR BOARD MEMBERS

Following up on the last issue, we continue to introduce members of our Board of Directors and the volunteer docents who work with visitors to the Museum.



Steve Barnett is the current President of the Museum, having served since 2018. He worked for over 30 years as a supervisor in a clinical laboratory before retiring in 2015. He was an avid furnace glassblower, off hand and lampworker (using a torch). His mother was an antique dealer who exposed him to antique glass, and he owns many of her pieces.



Jacque Rocha is a retired Kindergarten teacher. She enjoys traveling and spending time with grandchildren. She stays active by attending yoga and going for walks. In addition to serving on the Board, she volunteers as a docent, attends cleaning days and helps with tours.



Shirley Barnett has been the current Museum's Treasurer and also oversees Museum Memberships since 2018. She has also written articles for the Newsletter. She has a BS in Nursing as well as an MBA and has over 30 years' experience in healthcare and administration. She is now retired, but continues to work on projects associated with the healing process for cancer patients.



Parking Lot Sale of Antique and Collectable Glass

Saturday, November 11th, 2023
from 9AM-4PM

Where: **Historical Glass Museum**

1157 N. Orange Street

Redlands, CA 92375

Phone: 909-798-0868

Clearance sale of glass donated for our Gift Shop

Priced to go -- from \$1 on up -- Cash preferred

Best to bring your own wrap and boxes in case we run out!

The Museum is having a parking lot sale this month. You might wonder why we're doing so.

The Museum is limited in the amount of space we have for storage, as hundred-year-old houses are not as spacious as modern homes. Over the past few years, we have received a number of generous donations of glass and books and, frankly, we're running out of space.

What we will be selling in the Parking Lot Sale consists of items that were donated specifically to be sold to support the Museum, duplicate items from the collection and many reference books on glass.

We prefer to offer these items at reasonable prices to our visitors, members and the public, rather than spend money to rent overflow storage space.

So, mark Saturday, November 11 on your calendar. Hopefully you can add to your collection or glass reference library, and at the same time help the Museum free up space and bring in cash to support our normal operations.

Group Tours of the Museum



Weekday group tours for groups of 8 or more visitors are available by appointment. The charge is \$5.00 per person, with a minimum charge of \$40.00. For information and bookings, call Bill Summers at **951-850-0915**.

Tour bus parking and a handicap ramp are available. The museum entrance and wheelchair ramp are located at the rear parking lot. There is also parking along the street curb on Western at Orange.

We had a "Day Trippers" bus tour of 13 visitors in September and "Tour-Huntington" group in October with 30 visitors.

RESTORATION FUND

The Board of Directors established a Restoration Fund designated to set aside funds for restoration and maintenance of our century-old building.

The current balance in the fund is: **\$5327.20**. This reflects the recent payment for the new roof. The building does require periodic maintenance and the Restoration Fund is still an active need. The Board welcomes cash donations designated for the Restoration Fund. You may also designate "in Memory of " or "in Honor of " with your donation.

Checks should be made out to the Museum, with a note designating the Restoration Fund. Send to:

Historical Glass Museum
P. O. Box 9195
Redlands, CA 92375-2395

NOVEMBER 2023 FROM THE PRESIDENT:

The holidays are rapidly approaching, and we hope you can get an early start to your shopping by taking advantage of our huge parking lot sale on Saturday, November 11th.

We are also having a 30% off sale inside the Museum at the same time which means members would receive 40% off or 50% for lifetime members and docents.

Unfortunately, there was a car accident in front of the Museum, and our brand-new wrought iron fence was damaged. We expect to have the repairs completed in the next couple of weeks.

I especially would like to thank our volunteers, as well as our student volunteers Joel Compton, Joseph Chaparro, and James Ojeda, who have helped us with the heavy lifting from the upstairs storage and bringing the glass downstairs in preparation for the parking lot sale. Their help has been invaluable and they have been most generous with their time.

Hope you have a wonderful "shopping for glass" holiday season!

Steve

BOARD OF DIRECTORS

We will be introducing our Board of Directors and volunteer docents in the next few issues. Here is the complete list.

Board Members

President: Stephen Barnett
Vice President: Bill Summers
Secretary: Michael Krumme
Treasurer: Shirley Barnett
Board Member: Greg Sloan
Board Member: Jan Korfmacher
Board Member: David Adams
Board Member: Jacque Rocha
Board Member: Doreen Ward
Board Member: Barbara Jenks

Docents

Bill Summers
Monica Barragan
Bob Crha
Greg Sloan
Jacque Rocha
Barbara Jenks
Shirley Barnett
Stephen Barnett

A WORD ABOUT DONATIONS

The Museum has scheduled a parking lot sale this month in order to reduce our inventory of donated glass and books. We're simply running out of storage space.

The Historical Glass Museum Foundation accepts two types of donations: cash donations and in-kind donations. The term "in-kind donations" refers to gifts of things like equipment, supplies, and in our case in particular, antique and collectible glassware.

Cash donations are the most flexible type of donation, because the Museum's Board of Directors can utilize the liquid funds to pay for the monthly and periodic expenses of running the Museum – those which keep the doors open for visitors; those which publicize the Museum to increase awareness, support and membership; and those which keep the property safe, secure, and maintained.

However, many members as well as the general public make in-kind donations. Occasionally, we receive offers of useful items like display aids, cleaning supplies, signage, and so on. These donations help reduce the cash outlays the Museum must make, thereby preserving our assets. Such in-kind donations are welcome.

The main type of in-kind donations we receive are **antique and collectible glassware**. Each year, we receive hundreds of pieces of glass, and these donations are all appreciated. Some items immediately become part of the permanent collection. Others are designated for sale in our Gift Shop. The funds raised by sales of donated glassware each month can pay for the Museum's basic monthly operating expenses, such as utilities, trash collection, landscape maintenance and taxes.

We generally cannot accept furniture, including display cases, china cabinets, etc. We simply do not have the space to store them, or to display them for sale.

For details on how to make in-kind donations and what we can and cannot accept, please visit our web site and select the "donations" tab.

www.HistoricalGlassMuseum.com

Should you have any questions about donations, including scheduling a date and time to deliver your donation to the Museum (so we can arrange for a docent to be present to assist), you can email us at

historicalglassmuseum4@gmail.com

FROM THE COLLECTION

Here are a few photos of some of the glass that is on display at the Museum. Please come see the Museum in person: there's lots more to see!



Riverside Glass Co.



We have Bells – Lots of Bells



Automobile Bud Vases from the collection of Dr. Stanley Korfmacher